

Stainless steel repair clamp Series C3 25 - C3 30

Enables repairing cracks, holes, splits on pipes.



Description

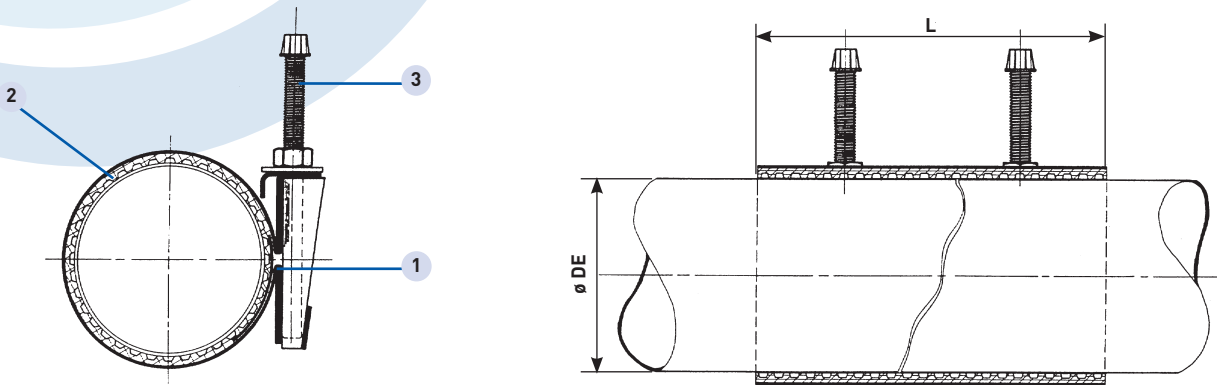
- Single or double bands.
- To repair steel, ductile iron, asbestos cement pipes or PVC-PE under special conditions.
- All stainless steel AISI 304.
- Ease and speed of installation.
- Approval:
 - Drinking water approved.
- On request:
 - Other sizes on request,
 - Triple bands and tapping sleeve on request,
 - Stainless steel AISI 316 construction.
 - EPDM for high temperature, NBR, VITON.
 - Pressure > 10 or 16 bar.

Technical data

- Range: DN 40 to 500.
- Range single band with handle, until 168-180.
- Maximal working pressure according to range of application (see table).
- Temperatures: +10°C to +60°C.

Applications

- Water networks.
- Pumping, treatment, watertank.
- Fire protection networks.
- Irrigation networks.
- Sewage networks.



Item	Designation	Materials
1	Body	Stainless steel AISI 304*
2	Sealing gasket	EPDM**
3	Bolts	Stainless steel AISI PTFE coated

* Stainless steel 316, on request. ** NBR on request.

Single band - Series C3 25

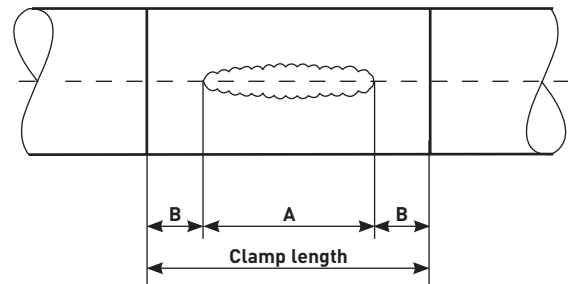
OD min mm	OD max mm	PN	L mm	Weight kg
38	42	16	150	1,5
48	55	16	150	1,5
57	64	16	150	1,6
63	70	16	200	1,8
67	74	16	200	1,9
73	80	16	200	1,9
75	83	16	200	1,9
82	90	16	200	2,0
95	104	16	200	2,0
102	112	16	200	2,0
113	123	16	200	2,0
125	135	16	300	2,6
139	150	16	300	4,1
145	155	16	300	3,9
159	170	16	300	4,4
168	180	16	300	4,5
176	186	10	300	5,0
193	203	10	300	5,1
219	230	10	300	5,3
243	253	10	300	5,5

Double bands - Series C3 30

OD mini mm	OD maxi mm	PN	L mm	Weight kg
88	110	16	200	3,4
112	134	16	200	3,5
138	160	16	250	5,1
190	210	10	300	6,6
273	293	10	300	7,6
295	315	10	300	7,9
314	335	10	300	8,6
365	385	10	400	8,8
404	424	10	500	9,2
420	440	10	500	9,4
468	488	10	500	9,8

Calculating the necessary length

- The width of the clamp should be equal to at least the pipe OD.
- The length of the clamp should be 150 mm greater than the length of any crack on pipes with an outside diameter up to 350 mm. On larger pipes this should be at least 200 mm.
- For PVC pipes, the length of the clamps should be 50 % longer and bolt torque should be reduced by 50 %.
- The maximum allowable distance between two pipe ends should not exceed 10 mm.
- The maximum allowable deflection is 2 degrees.
- The maximum allowable offset should not exceed 3 mm.



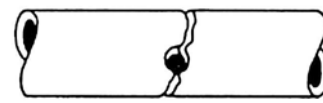
Examples of use:



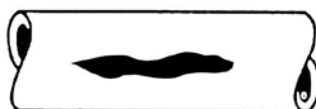
Pipe longitudinal connection



Damage due to broken pipes



Cracked pipe after hot tap



Longitudinal cracks



Misaligned pipes



Pit holes

BAYARD

Tél. + 33 (0)4 37 44 24 24 - www.bayard.fr

BAYARD - Series C3 25 - C3 30 - PPHT00-11-004H-EN

The technical data and performance can be modified without prior notice depending on the technical evolution.